

The Manure Spreader

February
Volume 43



2012
Number 2

Newsletter of the Greater Kansas City Gardeners of America



"Now crocuses come smiling through
Grey February's fog and mist
gold like the sun, deep lilac too
Defying winter's icy kiss."

Table of Contents

The President's Message	1
This Month's Meeting	1
Board Member Info	2
Herb of the Month.....	2
Board Meeting Minutes.....	3
Treasurer's Report	3
Garden Checklist.....	4
Our February Weather.....	4
Plant Sale Update	4
Upcoming Events	5
Start Trees Off Right	6
NEW Plant Hardiness Zone Map ..	7
New Members!.....	8
In Case You Missed It	8
Suzanne's Cooking Corner	8
Member News.....	9
Lifetime Members	9
GOA Cookbook (last chance)	9
Programs for 2012	9
February Birthdays.....	9
Refreshment Schedule.....	9
February Calendar.....	10

FEBRUARY TOUR

Tuesday, February 7, 2012

Bird's Botanicals
6:30 p.m.

BIRD'S BOTANICALS ORCHID CAVES

Speaker: David Bird

There will be a 45-minute tour of the climate-controlled tropical orchid growing facility containing more than 10,000 flowering orchids and a 15-minute class about orchids.

Refreshments will be served. Beautiful Orchids will be available for purchase; they make a *great* Valentine's gift!

Directions: Take 435 N (Missouri side), exit East on 23rd Street, Drive 1/10 mile and turn right (south) at the traffic light (Television Drive), stay on Television Drive until it ends at the last cave entrance. From there, the guard and signs will direct you. **GPS Programs are inaccurate for this address; it will get you lost!**

Please note, there is a \$5 cost associated with this tour. For more info, contact:

Vince Vogel, 816-313-8733
David Bird (c) 816-522-9230
Birds Botanicals 816-252-4478
www.birdsbotanicals.com
greaterkcgoa@gmail.com

Don't Forget !!!

Please remember to wear your name tag. ☼

THE PRESIDENTS MESSAGE

I attended the annual Cultivate KC Urban Growers Meeting this past weekend. It was the largest group of growers they have ever had attend one of these meetings.

There were several workshops offered. I sat in on Water Catchment and Raising Chickens in an Urban environment. The session on Water Catchment was particularly interesting, in light of the article I read recently in the Kansas City Star.

"To fully replace all the underground pipes that are past their useful life could require \$2 billion, and years of double-digit water rate increases."

This year alone the city plans to increase our water rates 12%, and that doesn't take into account the extra runoff and sewer charges.

So water is getting more and more expensive in Kansas City. The best thing we can do as gardeners is to better learn how to manage our resources, which includes learning how to catch and use that rain.

I hope that everyone has paid attention that our meeting is on a TUESDAY this month.

Finally, make sure you have it marked on your calendar, our 43rd Annual Plant Sale is April 26-28.

— Brad Lucht ☼

The Greater Kansas City Gardeners of America

Meeting:

The first Monday of each month
Loose Park Garden Center
5200 Pennsylvania
Kansas City, MO
6:00 p.m.

Mission:

To promote gardening education and related environment issues to the membership and the gardening public, through charitable, educational and scientific means.

2012 Officers

Brad Lucht - President
816-941-2445
GreaterKCGOA@gmail.com

VACANT - 1st Vice President
(Programs)

Betty Faye Watterson - 2nd Vice
President
816-561-5380

Lois Weber - Secretary
816-523-7025

Laura Bennison - Treasurer
913-909-7869

Joyce Byram
Immediate Past President
913-383-0499

2012 Board Members

Effie Mitsopoulos - 1 Year
816-333-1905

Kay Elliott - 1 Year
816-941-9459

Karen Langworthy - 1 Year
816-524-2165

Suzanne Hedrick - 2 Year
816-942-3057

Robyn Attaway - 2 Year
913-262-5585

Louise Kendrick - 2 Year
816-523-6359

www.tgoa-mgca.com

(password: lily)

HERB OF THE MONTH

By John Jett, WVU Extension Service

Parsley is the herb of the month for January.

Parsley, *Petroselinum crispum*, is a member of the family Umbelliferae. Also included in this family are parsnip, celery, dill, carrot, lovage, and a number of other well-known herbs and vegetables. The name "Petroselinum" is derived from the Greek word "petros" which means "stone," referring to the plant's habit of growing in rocky places. "Selinon" was the Greek word for parsley in ancient history.

Parsley is a good source of vitamins A and C, high in calcium, niacin, and riboflavin, and invaluable in seasoning and garnishing.

The two main groups of parsley used as herbs are curly leaf and Italian, or flat leaf; of these, flat leaf more closely resembles the natural wild species.

Parsley is slow to germinate, and it does germinate inconsistently, requiring anywhere between three and six weeks. Recommendations frequently encountered on the back of seed packages or in gardening catalogs include washing or soaking the seeds in water before planting. A scientific study of the chemistry of parsley seeds provides some insights not only into the utility of washing or soaking the seeds before planting, but also into the superstitions and beliefs of medieval gardeners.

Parsley contains chemicals called furanocoumarins in the seed coat. Because furanocoumarins prevent weed seeds from germinating, the home gardener won't have to weed parsley quite as often as other plants. But there is a complication--the same furanocoumarins also may interfere with the germination of the parsley itself.

Soaking the seeds overnight will reduce to some extent the month-long germination period. If sowing directly, seeds should be thinly dis-

tributed and planted no more than one-half inch to one inch deep, and seedlings can be thinned to approximately six to eight inches apart when they are an inch high. Some people like to mix in seeds of a plant that germinates rapidly--radish, for example--so that the row isn't inadvertently trampled or replanted during the month-long wait for seedlings to appear. It's a sound idea in any case to plant in late March or early April, when the spring showers are plentiful.

Parsley likes a well drained, moisture retaining soil. If growing in containers ensure that it has adequate drainage holes and that they aren't blocked. Parsley is slightly more fussy about its soil requirements than most herbs, a soil rich in rotted organic matter with good levels of nutrients will result in a good crop. Ensure the soil does not dry out - water more frequently in summer. You can add a mulch to the soil to reduce soil moisture loss and reduce competing weeds.

A fertilizer can be applied to the soil around every 4 weeks and this should sustain growth through the growing season.

Once parsley is mature, picking the outer leaves first guarantees that the plant will keep growing. Cut the outermost stalks just above ground level. This will encourage further growth. Cutting near the top of the stalks will not encourage such vigorous regrowth.

Parsley overwinters beautifully; the frozen plants can be dug out of the snow and thawed for use, although the plain-leaved varieties survive the freezes better than the curly leaved varieties. A biennial, parsley will flower and set seed if left undisturbed during its second year of growth. Perhaps due to its furanocoumarin content, parsley is rarely bothered by insects. One notable exception is the black swallowtail caterpillar, which perversely eats only plants that contain furanocoumarins. ☺





BOARD MEETING MINUTES

By Brad Lucht

The meeting was called to order by President, Brad Lucht at the Trailside Center at 6:05 PM.

Roll Call: Brad Lucht, Betty Faye Watterson, Lois Weber, Joyce Byram, Kay Elliott, Suzanne Hedrick and Effie Mitsopoulos were present. Absent were Laura Bennison, Louise Kendrick, Karen Langworthy and Robin Attaway.

Minutes

No previous minutes were available. We have a new secretary this year (**Lois Weber**), so next month we will have minutes to review.

Membership

TREASURER'S REPORT As of 10-24-2011

By Laura Bennison

Total Income (YTD)	\$14,081
Total Expenses (YTD) ...	\$15,685
Net Income	-\$1,614
Checking Balance	\$2,315
Money Market Balance	\$19,67
Reserves	\$19,674
Total Assets	\$22,011

(All figures are rounded for clarity)



52 members have renewed; we also have to members that converted to lifetime status (**Jean Davis, Chris Wilson**). Nine members may still renew. We have had three new members join the club already this year: **Jeanne Richardson, Malia Hatley** and the **Trailside Center** (Ann O'Hare).

Treasurer's Report

Joyce handed out the treasurer's report, as **Laura** was unable to attend. The board accepted treasurer's report as written. [A couple days later I noticed several errors in the report. These may be corrected in time for the next board meeting, at which time the Treasurer's Report in the newsletter will be updated. Until then, we'll continue to use the October figures. — Ed.]

Scholarship

No scholarship report was submitted. The national office has revised the application form; this new form must be used for 2012 scholarship applications.

Programs

We still do not have a Programs Chair. **Joyce** is no longer seeking a candidate. This is a serious problem for our club; we need a volunteer to come forward to help coordinate monthly speakers.

The February meeting is a tour of Bird's Botanicals orchid caves. Note that this is on a Tuesday, not our normal Monday meeting. Also note that there is a cost of \$5 per member.

In April we will have a Supertufa class, to be held at the home of **Vince Vogel**. This will happen on a Saturday in April to be determined. The board approved to pay **Lady Elaine Coleman** \$100 to teach the class. There will be an additional fee of \$20 per member to cover supplies. **Suzanne** thought it would be a good idea for us to learn how to make containers, which could then be sold at the plant sale.

Prudence Irwin-Brennan still

needs to find a speaker on Lilacs for the May meeting. **Brad** is working to find a speaker on Forcing Bulbs/Winter Bulbs for the November meeting. If you know of a person that is an expert on any of these topics, please let us know.

Youth Gardening

Joyce had no report. **Garland Richardson** has volunteered to assist **Joyce** with our Youth Gardening efforts. **Brad** downloaded the new Youth Gardening manual from the national office and provided copies to the Youth Gardening committee. Last year there wasn't a single club that submitted an entry for the national Sunflower/Pumpkin competition. We can do better than this.

OLD BUSINESS

We need a First Vice-President!

Brenda Sheehan may be a candidate for the gourds program in August if **Prudence** is unable to find someone.

Cookbook

Suzanne reported that a few recipes have come in from the Kansas and Michigan chapters. **Marlene Eib** (816-761-9381) is calling members for recipes. Please make sure you share your favorites with her.

Calendars

If you haven't already done so, come to the next club meeting and pick up your 2012 calendar; it is free with your renewal or paid

(Continued on page 6)

The Manure Spreader is a monthly publication of the Greater Kansas City Gardeners of America.

Publisher, Editor, Writer
Brad Lucht
816-941-2445

The deadline for articles submitted for publication is the 3rd Monday of each month.

Mail to: Brad Lucht
11635 Cherry Street
Kansas City, MO 64131-3836

E-mail: GreaterKCGOA@gmail.com



FEBRUARY GARDEN CHECKLIST

By University of Missouri Extension & K-State Extension offices

VEGETABLES

Draw garden layout to assist with the planting process.

Weeks 1-4

Season extending devices such as cold frames, hot beds, cloches and floating row covers will allow for an early start to the growing season.

Start onion seeds indoors now.

Don't work garden soils if they are wet. Squeeze a handful of soil. It should form a ball that will crumble easily. If it is sticky, allow the soil to dry further before tilling or spading.

Weeks 3-4

Sow seeds of broccoli, cauliflower, Brussels sprouts and cabbage indoors now for transplanting into the garden later this spring.

ORNAMENTALS

Weeks 1-4

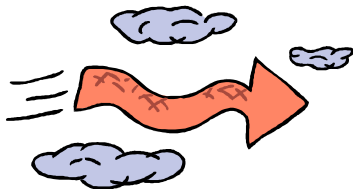
Winter aconite (*Eranthis* sp.) and snowdrops (*Galanthus* sp.) are hardy bulbs for shady gardens that frequently push up through snow to bloom now. Gently brush off heavy snows from tree and shrub branches.

Inspect summer bulbs in storage to be sure none are drying out. Discard any that show signs of rot.

Enjoy the fragrant blooms of the

OUR FEBRUARY WEATHER

Average Low:	22 °F
Average High:	41 °F
Average Rain:	0.0 in
Average Snow:	4.4 in
Average Wind:	11 mph
Average Humidity	71.5%



Ozark Witch Hazel flowering in shrub borders or wooded areas on warm sunny days. On warm days, drag out the hose and water perennials.

Take geranium cuttings now. Keep the foliage dry to avoid leaf and stem diseases.

Replenish winter mulch around roses and other plants.

Weeks 2-3

Seeds of slow-growing annuals like ageratum, verbena, petunias, geraniums, coleus, impatiens and salvia may be started indoors now.

Weeks 2-4

Sow seeds of larkspur, sweet peas, Shirley poppies and snapdragons where they are to grow outdoors now. To bloom best, these plants must sprout and begin growth well before warm weather arrives.

Week 4

Dormant sprays can be applied to ornamental trees and shrubs now. Do this on a mild day while temperatures are above freezing.

Start tuberous begonias indoors now. "Non-stop" varieties perform well in this climate.

FRUITS

Select varieties and order new fruit trees.

Weeks 1-2

Collect scion wood now for grafting of fruit trees later in spring. Wrap bundled scions with plastic and store them in the refrigerator.

Weeks 1-4

Check fruit trees for tent caterpillar egg masses. These are laid on twigs in tight clusters that resemble an oblong brown lump of gum wrapped around the stem. Prune off these twigs or destroy the eggs by scratching off the clusters with your thumbnail.

Weeks 3-4

Begin pruning fruit trees. Start with apples and pears first. Peaches and nectarines should be pruned just before they bloom.

LAWNS

Tune up and repair the mower to

PLANT SALE UPDATE

I visited **The Flower Farm** last fall, as part of our preparation for the plant sale. **Jane Scaro** gave me a head's up that Keith and Roberta grow lisianthus, and there was no minimum order for our club! So we will have lisianthus for sale this year. That should make many of our customers happy. We already order our herbs from The Flower Farm, so there is no extra shipping. Speaking of herbs, they must be ordered the first week of February, so you know the plant sale is getting close.

I'm also excited to report that Neosho Farms has their list of tomatoes, peppers and vegetables online. Prices have gone up 50¢ a flat. **Team Veggie** (that would be **Effie Mitsopoulos** and myself) will be having a veggie strategy meeting either the first or second week-end in February. Contact either one of us for further info.

Effie and I also attended a presentation by Kaw Valley Greenhouse and the Cultivate KC Annual Urban Growers Meeting.

So far 22 members have volunteered to work at the plant sale! 🌱

get a jump on the season.

MISCELLANEOUS

Take a soil test if one has not been done the last five years.

Weeks 2-4

Maple sugaring time is here! Freezing nights and mild days make the sap flow.

Houseplants

Weeks 1-4

Begin to fertilize house plants as they show signs of new growth. Plants that are still resting should receive no fertilizers yet.

Check plants for insects, mites or other problems and treat as needed.

Weeks 3-4

Tall and leggy house plants such as dracaena, dieffenbachia and rubber plants may be air layered now.



UPCOMING EVENTS

Bird Chat

February 4, 9:30 AM - 11 PM
Nature Center Activity Room
Ironwoods Park
147th & Mission Road, Leawood
Pre-register: 913-339-6700

Doc & Diane Gover of Wild Birds Unlimited will discuss feeding our feathered friends during National Birdfeeding Month and what high calorie foods should be offered during the cold weather. They will explain the importance of participating in The Great Backyard Bird Count. Your questions will be answered and problem solving will be discussed. Educational handouts will be provided.

Metropolitan Lawn & Garden Show

February 10-11, 10 AM - 9 PM
February 12, 10 AM - 6 PM
American Royal Center
1701 American Royal Court
Kansas City, MO 64102
Info: 816-931-4686
http://www.patrihaproductions.com/MetroLawnGardenShow/stage_times.php

Licensed landscape contractor and certified landscape technician Ahmed Hassan vows a great home starts with a solid landscape. Ahmed holds a certificate in ornamental horticulture and maintains a qualified applicator certification for pest control. One of the Bay Area's most sought-after young landscape designers, Ahmed has spent more than 20 years mastering the business of landscaping and home improvement. His forte is residential design, where he leans heavily on his experience and knowledge of plant identification and soils, as well as irrigation and maintenance. He runs his own landscape consulting, installation, maintenance and irrigation business. Ahmed shares his valuable expertise and candid humor on DIY Network as host of Turf War and Yard Crashers.

The Orchid Society of Greater Kansas City will showcase a 2,500

squarefoot Orchid Show at the Metropolitan Lawn & Garden Show.

The exhibit will include artistically arranged displays featuring the "queen of flowers," by a large number of orchid purveyors, including orchid vendors, orchid societies and local copyists. Hundreds of orchids, large and small, including rare species and man-made hybrids from around the world will be on display.

The Water Garden Society and House of Rocks join together to bring you "Water Gardens- A Sustainable Eco System". As you meander your way through the display, enjoy the peaceful sounds of running water and the tranquility that only nature can offer. Society members will be on hand to answer any questions you might have on the benefits of having your own water garden.

Honeybee Keeping 101

February 11, Noon—4 PM
Powell Gardens
1609 NW US HWY 50, Kingsville, MO, 64061-9000
<http://www.powellgardens.org/EventDetail.asp?id=2301>
Call Linda at 816-697-2600 ext.209 to register.

In this class you will learn the basics of beginning beekeeping, equipment needed, where to obtain bees, how to manage bees and how to harvest the honey. Hal Reidler is a Master Beekeeper; his interest in beekeeping started at a young age, helping his father tend the hives. Today, sixteen hives make the foundation of his business Reidler Bee Farm.

2012 Kansas City Garden Symposium—Grow the Good Life

February 18, 9 AM
The Nelson-Atkins Museum of Art
4525 Oak Street in Kansas City
Info: 816-697-2600 x209

Join gardening enthusiasts from across the region for tips and inspiration for "growing the good life" during the 2012 Kansas City Garden Symposium.

Activities include a full day of en-

tertaining gardening inspiration with practical tips, techniques and hands-on information, plus a pre-symposium demonstration and dinner lecture.

Ellen Ogden - "Classic Potager Design"

A true kitchen garden goes beyond the simple straight rows of a vegetable garden to combine art and food in ways that enhance the experience of growing food.

In this workshop, you will learn how to design a new vegetable garden or renovate an existing garden based on classic design. Ellen will share six basic steps to inspire you to grow a bountiful and artfully designed food garden at the perfect time to plan your garden in anticipation of ordering your seeds for the spring ahead. Ellen is the author of four books, including "The Complete Kitchen Garden," and co-founder of The Cook's Garden seed catalog. She has appeared on numerous television shows and written about gardening for many magazines.

Dan Heims - "Garden Gems: The Most Exciting New Perennials and Tropicals"

Join the world-traveling plant hunter Dan Heims for a look at some of the most exciting perennials and tropicals coming to market. The president of Terra Nova Nurseries in Oregon has written two books, including one on horticultural humor.

Roy Diblik - "The Know Maintenance Approach"

Roy is co-owner of Northwind Perennial Farm in Burlington, Wisconsin. His garden designs emphasize plant relationships, demonstrated in gardens he has helped to design, grow and install—including Chicago's Millennium Park, the Art Institute of Chicago and the lake-side perennial plantings for the new Oceanarium at the Shed Aquarium. He is the author of "Small Perennial Gardens: The Know Maintenance Approach."

(Continued on page 6)

START TREES OFF RIGHT

By Ward Upham, K-State Extension

A study at K-State was conducted to investigate the inhibition of growth of transplanted, seedling trees when lawn grasses were allowed to grow up to the trunk. There were five treatments, including three with different species of grass:

1. Bare soil maintained with herbicides.
2. Area under tree mulched 3 inches deep.
3. Tall fescue allowed to grow under tree.
4. Bermuda grass allowed to grow under tree.
5. Kentucky bluegrass allowed to grow under tree.

All treatments were applied to Eastern redbud seedlings as well as to pecan seedlings. All trees were fertilized according to recommendations and watered during the growing season with up to 1 inch of water if rainfall was deficient. At the end of two years, trees were measured and harvested. Data taken was for diameter 6 inches above the ground, weight of aboveground portions of the tree, leaf area, and leaf weight.

There were no differences in any measure between the mulched treatment and the bare soil treatment for either tree species. All measures showed significant growth increases if lawn grasses were controlled around the tree. Results include the following:

Caliper: Caliper measures 6 inches above the soil surface were twice as large for plots without fescue or, but only 50% larger when compared to the bermuda grass plots.

Top growth weight: Redbuds showed a 300% weight advantage and pecans a 200% increase for plots with grasses controlled.

Leaf area and leaf weight: Leaf areas were 200% larger in plots without grass competition and leaf

(Continued on page 8)

(Continued from page 3)

members. All remaining calendars are on sale for \$1.25, less than half price! Make sure you call Joyce, (913) 383-0499, to reserve your calendar.



Volunteer Survey

Approximately 30 members filled in the volunteer survey. **Betty Faye** tallied the results. This is an excellent resource for new volunteer help.

NEW BUSINESS

Brad purchased 54 Amaryllis for \$1 each for possible use by the club. Undecided as to value of bulbs, however pots may be worth selling. Possibilities were for **Garland Richardson** to nurse back to health and sell them at the March meeting, or sell the ceramic pots at the plant sale. No motion to reimburse Brad as purchase not pre-approved by the board.

Fran Lindgren is the new chair for the **Refreshment Committee**. She still needs one member to step up and bring refreshments for the August meeting.

Loose Park Garden Center has forbidden us from donating food to Harvesters. Brad will work with Harvesters to identify a volunteer day in place of our food donations.

Lois Weber is temporarily replacing Betty Faye at the **Welcome Table**. She will hand out the lucky numbers and name tags.

The meeting was adjourned at 7:02 PM.

The next Board Meeting will take place the third Monday in February, the 20th, at **7 PM** at the Trailside Center. ☺

(Continued from page 5)

Andrea Bellamy - "Growing Delectable Container Edibles"

Andrea is a home and garden writer from British Columbia who blogs about organic vegetable gardening in small, urban spaces. Her book, "Sugar Snaps and Strawberries: Simple Solutions for Creating Your Own Small-Space Edible Garden," was published in 2010.

Maple Sugaring

February 18, 10 AM—2 PM
Conservation Discovery Center
4750 Troost, KC MO 64110
Info: (816) 759-7300

As winter loses its grip on the land, the trees begin to awaken. Sap from deep in the roots starts to make its way to the treetops. February is prime time for tapping Maple trees to collect the sweet bounty within. We will demonstrate how to choose the right tree, how to collect the raw sap, and the equipment required to boil sap down to maple syrup or sugar. Join us "on the hour" from 10 a.m. to 2 p.m. and start your own maple sugaring tradition.

Gardening with Nature

February 21, 6:30 PM
Kauffman Foundation Conference Center, 4801 Rockhill Rd., KCMO
Info: 816.396.5541

Alan Branham, Director of Horticulture, Powell Gardens will teach you how to create a healthy personal sanctuary for you and all of life with design, plant selection and garden preparation. Free, open to the public. Door prizes.

Garden Book Sale

March 3, 10 AM—2 PM
Plaza Branch - KC Public Library
4801 Main, KCMO 64112
Info: 816.396.5541

The Garden Center Association and the Friends of the Kansas City Public Library have joined forces to bring you the Garden Book Sale. Browse through hundreds of gardening books and magazines at prices so low they are sure to go fast. ☺

USDA UNVEILS NEW PLANT HARDINESS ZONE MAP

The U.S. Department of Agriculture (USDA) has released the new version of its Plant Hardiness Zone Map (PHZM), updating a useful tool for gardeners and researchers for the first time since 1990 with greater accuracy and detail. The new map—jointly developed by USDA's Agricultural Research Service (ARS) and Oregon State University's (OSU) PRISM Climate Group—is available online at www.planthardiness.ars.usda.gov. ARS is the chief intramural scientific research agency of USDA.

For the first time, the new map offers a Geographic Information System (GIS)-based interactive format and is specifically designed to be Internet-friendly. The map website also incorporates a "find your zone by ZIP code" function. Static images of national, regional and state maps have also been included to ensure the map is readily accessible to those who lack broadband Internet access.

"This is the most sophisticated

Plant Hardiness Zone Map yet for the United States," said Dr. Catherine Woteki, USDA Under Secretary for Research, Education and Economics. "The increases in accuracy and detail that this map represents will be extremely useful for gardeners and researchers."

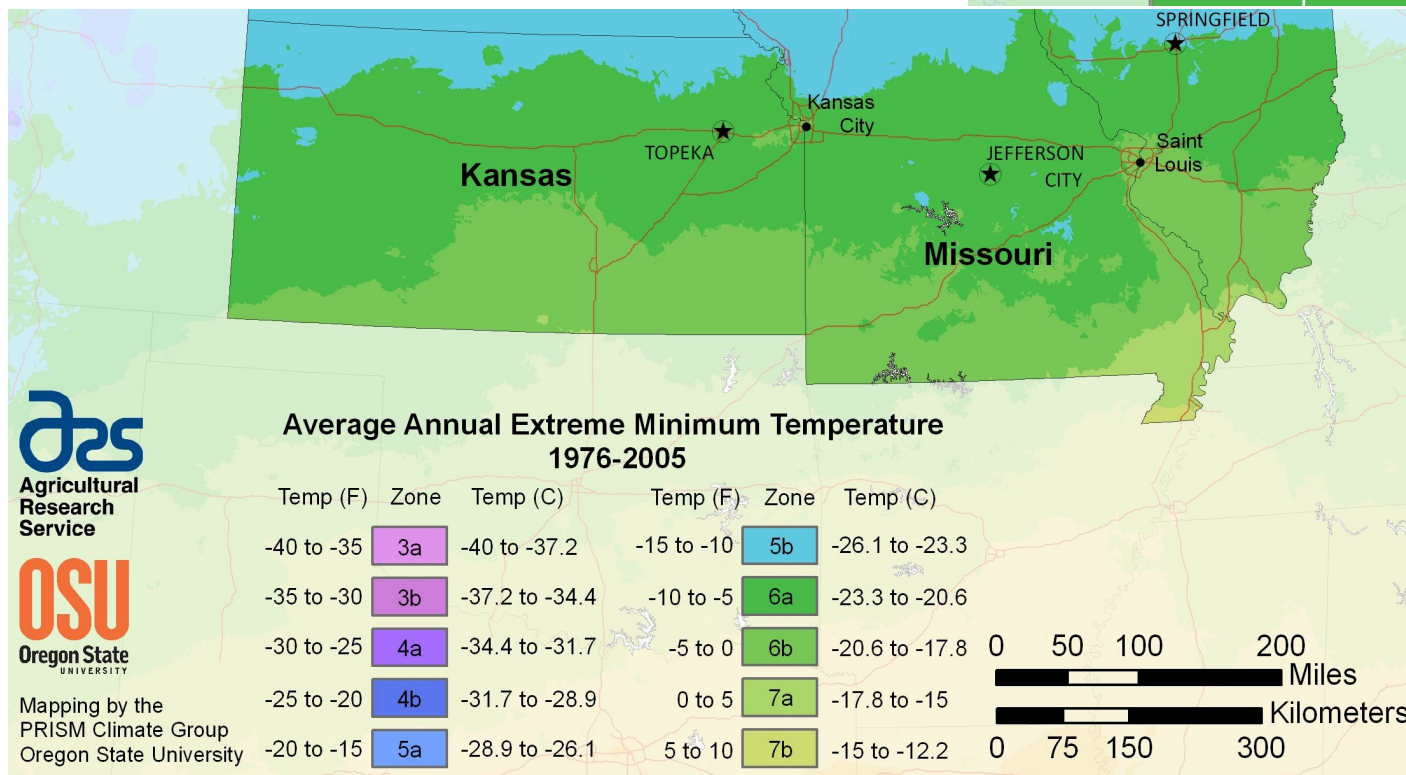
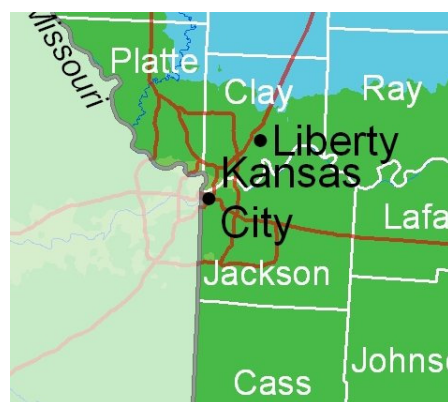
Plant hardiness zone designations represent the average annual extreme minimum temperatures at a given location during a particular time period. They do not reflect the coldest it has ever been or ever will be at a specific location, but simply the average lowest winter temperature for the location over a specified time. Low temperature during the winter is a crucial factor in the survival of plants at specific locations.

The new version of the map includes 13 zones, with the addition for the first time of zones 12 (50-60 degrees F) and 13 (60-70 degrees F). Each zone is a 10-degree Fahrenheit band, further divided into A and B 5-degree Fahrenheit zones.

Compared to the 1990 version, zone boundaries in this edition of the map have shifted in many areas. The new map is generally one

5-degree Fahrenheit half-zone warmer than the previous map throughout much of the United States. This is mostly a result of using temperature data from a longer and more recent time period; the new map uses data measured at weather stations during the 30-year period 1976-2005. In contrast, the 1990 map was based on temperature data from only a 13-year period of 1974-1986.

Most of Kansas City is now classified as zone 6a, although there are pockets of 6b and even 7a. Zone 6a tells us that the average coldest temperature is -10 to -5 °F. This change means that we may soon see new varieties of plants at our local stores. ☼



Mapping by the PRISM Climate Group Oregon State University

NEW MEMBERS!

By Brad Lucht

Isn't this wonderful? Three new members have joined our club.

Jeanne Richardson first got involved with our club when she volunteered to become a member of the calling committee, and since she was going to be calling members, she decided to become one!

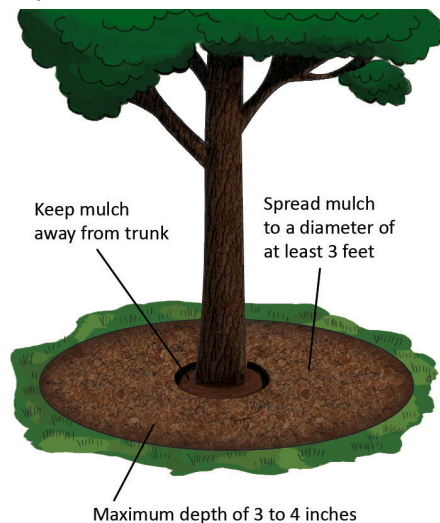
Malia Hatley was a guest at our January meeting. She enjoys growing zinnias, agastache, Black-eyed Susans, anything to attract the bees. She starts all her plants from seed, and this year that will be even easier, because her husband has built her a greenhouse!

Finally, let's welcome **Ann O'Hare** and the **Trailside Center**. Last year **Lou Clairmont** and I planted some leftover plants from the plant sale in their rain garden. Not satisfied with that, we eventually planted a couple flower beds as well. This spring we will put in a Native American "Three Sisters" garden. The Trailside Center graciously allows us to have our board meetings there. ☼

(Continued from page 6)

weight showed a 300% increase.

The obvious conclusion from this study is that grasses must be controlled under a newly transplanted tree to get the best possible growth. How far from the trunk should the grasses be controlled? Try a minimum of 3 feet. ☼



IN CASE YOU MISSED IT ...

There was hardly an empty chair in the room at our January meeting, as gardeners from far and wide came to hear our January Speaker, **Rita Arnold**, of **Arnold's Greenhouse**.

37 attendees, including 14 guests, were enthralled by the slides of the new perennials Rita shared with us.

John Arnold started off the evening by describing his new collec-

tion of native plants, "Taste of the Tall Grass Prairie". Native plants are by far the best thing we can grow to support our dwindling population of pollinators.

Arnold's has an open house April 2-7, when all plants will be 10% off. Our club will be organizing a car pool to make the trip down there. I can't wait to get some strawberry mint!

arnoldsgreenhouse.com.

SUZANNE'S COOKING CORNER

February is a good month for soup. This month I'd like to share a recipe for Potato Ham Chowder.

Each month we feature a recipe from one of our members. Call Suzanne (816) 942-3057 with your recipe, or email it to GreaterKCGOA@gmail.com. ☼

Delicious Ham and Potato Soup

Recipe By : Brad Lucht
Serving Size : 8 Preparation Time : 0:30
Categories : Ham Potatoes Celery Garlic Onion

Amount	Measure	Ingredient -- Preparation Method
5		russet potatoes -- peeled/diced
1	stalk	celery -- diced
1	small	onion -- finely chopped
1/2	cup	diced carrots
1	clove	garlic -- minced
1 1/2	cups	cooked ham -- diced
3	cans	chicken broth
1	teaspoon	black pepper -- * see note
7	tablespoons	butter -- divided
5	tablespoons	Wondra (or flour)
2	cups	half and half -- * see note
		shredded cheddar cheese

Melt 2 Tb butter in stockpot over medium heat.

Add celery, onion, carrots and ham. Stir until vegetables are tender, about 3 minutes. Add garlic and cook for 1 minute more.

Add potatoes. Add enough chicken broth just to cover. Bring to a boil. Cover and cook until potatoes are tender, 10 to 15 minutes.

In a separate saucepan, melt butter over medium heat. Add half and half and Wondra. Grind in black pepper. Whisk until thick and it comes to a boil, about 5-10 minutes.

Stir the milk mixture into the stockpot, and cook soup until heated through. Top bowl with cheddar cheese and serve immediately.

NOTES : *or maybe 1/2 ts
*or substitute 1 cup cream

MEMBER NEWS

Dorothea Eib-Irwin is coming along very slowly. She has been in and out of the hospital the last month. Still, we hear she can't wait to rejoin the calling committee. [I miss our visits, Dorothea! — Ed.]

Chuck Brasher was back in and out of the hospital, this time with low potassium levels. Chuck has a piece of advice for us: "Never get old!"

Shirley Woody may have to have surgery on her hand. She has that carpal tunnel. This may put a crimp in Shirley's gardening this spring. Shirley, if you need any help, just give us a holler!

Prudence Irwin-Brennan said to heck with technology and got rid of her computer. If you want to talk to Prudence, you'll have to do it the old fashioned way ... (816) 356-9499.

Karen Nielson and her husband have finally gone and done it. These new retirees have moved to Colorado! While they will be spending most of their time there, for a month or so each winter you'll find them in Florida. Karen tells me they are located about 75 miles west of Denver. The county where they live does have a garden club but it is not affiliated with the Gardeners of America.

Here is their new address:

Karen Nielson
P.O. Box 929
Frisco CO 80443-0929



Share your member news. Give Betty Faye a call and let her know what's 'growing on' in your world!

PROGRAMS FOR 2012

Date	Program	Speaker
2/7	Tour: Bird's Botanicals (Orchids)	David Bird
3/5	Ask Mr. Tomato Head	Brad Lucht
4/?	Make Your Own Hypertufa Container	Lady Elaine Coleman
5/7	Lilacs	TBD
6/4	Annual Friends and Family Picnic	Adam Ant
7/9	Flower Pounding	Kay Elliott
8/6	Gourds	TBD
8/18	Class: Canning Your Own Pickles	Brad Lucht
9/10	Tour: Overland Park Arboretum & Botanical Gardens	
10/1	Annual Banquet & Silent Auction	Louise Brooks
11/5	Planting & Forcing Bulbs	TBD
12/3	Annual Wreath-making Party	Holly Golightly

FEBRUARY BIRTHDAYS



Dan Dickinson	2/2
Mildred Dollman	2/5
Brad Lucht	2/25
Mary Jo Wallerstedt	2/27
Suzanne Hedrick	2/28



If you don't see your birthday listed here, please give Betty Faye a call so we can get you added to the list. Happy birthday, everybody! 🎂

LIFETIME MEMBERS

GROW

Chris Wilson and **Jean Davis** have decided it is true love and have become lifetime members of our garden club. Both originally joined our club in 2004. It seems just like yesterday! 🌱

GOA COOKBOOK

February is your last chance to submit recipes for the Gardeners of America cookbook.

☎ Marlene Eib, (816) 761-9381, or email it in to GreaterK-CGOA@gmail.com 🌱

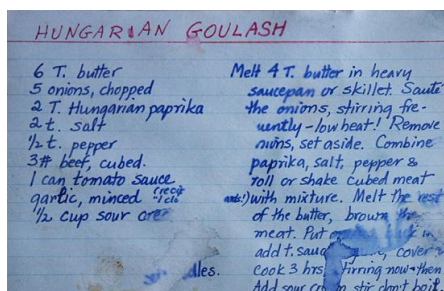
REFRESHMENTS

Suzanne Hedrick provided the treats for our January meeting.

February	Fran & Pat Lindgren
March	Dyanne Neff
April	Kay Elliott
May	Margaret Singer
June	potluck picnic
July	Shirley Woody
August	YOU?
September	(OP tour)
October	(banquet)
November	Lois Weber
December	Robyn Attaway

Fran Lindgren is the chair of our Refreshments committee. Please thank her at the next meeting for the wonderful job she has done putting together this volunteer list.

And give Fran a call at 816-822-8428 to volunteer for the August meeting. 🌱



LOOKING AHEAD TO **Feb** AND BEYOND

February 1 *Langston Hughes' birthday (1902)*

February 2 *Groundhog Day*

February 3 *The Day the Music Died (1959)*

February 8 *Boy Scouts Day (1910)*

February 7
Tuesday
6:30 PM
Greater Kansas City GOA Tour
Orchid Caves
Speaker: David Bird

Bird's Botanicals
8201 E. 23rd Street
Kansas City MO 64129

February 12 *Abraham Lincoln's birthday (1809)*

February 14 *Saint Valentine's Day*

February 15 *Remember the Maine (1898)*

February 18 *Pluto discovered (1930)*

February 20
Monday 7:00 PM
Greater Kansas City GOA Board Meeting
Members are encouraged to attend

Trailside Center
99th & Holmes

February 22 *George Washington's birthday (1732)*

February 29 *Leap Year Day*

April 26-28 **43rd Annual Plant Sale**

Gomer's Square

Greater Kansas City Gardeners of America
11635 Cherry Street
Kansas City MO 64131-3836

